

# 600i Booklet System

## SPECIFICATIONS

### DSC-10/60i COLLATOR

Number of Bins	10, 20, 30, 40, 50, 60 (10 bins per tower)
Paper Size	Width: 4.1" - 14" Length: 5.8" - 24" <sup>2</sup>
Paper Weight	Fine quality paper: 52 - 157gsm (Cover: 52 - 300 gsm) Art coated paper: 79 - 157gsm (Cover: 79 - 300 gsm)
Bin Capacity	2.6"
Speed	Bookletmaking: Up to 5,200 sets/hour <sup>1</sup> Stacking: Up to 10,000 sets per hour <sup>1</sup>
Controller	PC Controller w/IMBF or Color Touch Screen LCD Control Panel <sup>3</sup>
Power	120V 60Hz 7.9 - 8.4A 910 - 960W
Dimensions (WxDxH)	34" x 33" x 78"
Weight	674 lbs.
Options	DSC-10/60i Bridge; LUR Lift Unit Right; DBM-400STR/STL Deep Pile Stacker, DCR-ST Left Exit Cross Stacker; DCR-BP Bypass Bridge, LDR, DSF2200(Duetto), Ultrasonic Sensor Kit, DSC1060ENVLP Envelope Kit

<sup>1</sup> Dependent upon connected devices, number of bins in use, paper size and paper condition.

<sup>2</sup> Width of paper must be within 7.88" - 9.05" when paper length is greater than 20".

<sup>3</sup> IMBF feature not available with the Color Touch Screen LCD Control Panel.

### DBM-600 BOOKLETMAKER

#### SIGNATURE BOOKLETMAKING

Sheet Size (Min./Max.)	4.13" x 6.69" to 14.33" x 25.19" <sup>4</sup>
Folding Capacity	Up to 30 sheets (Thickness: 0.11"/ 3.0mm) <sup>5</sup>
Stitching Capacity	Up to 50 sheets (Thickness: 0.19"/ 5.0mm) <sup>5</sup>

#### SIDE/SIDE STITCH & FOLD

Sheet Size	B5 LEF, A4 SEF, A4 LEF, A4SR SEF, A4SR LEF, LTR SEF, LTR LEF, LGL SEF, LGL LEF, B4 SEF, B4 LEF
------------	--

#### CORNER STITCH

Sheet Size (Min./Max.)	B5 LEF, A4 SEF, A4 LEF, A4SR SEF, A4SR LEF, LTR LEF, LGL SEF, LGL LEF, B4 SEF
------------------------	---

#### GENERAL

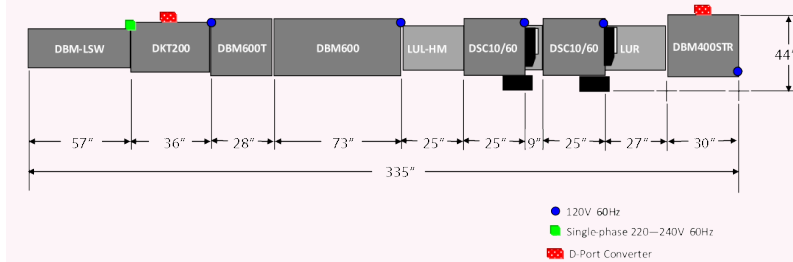
Speed	Up to 5,200 sets per hour*
Number of Stitcher Heads	2 standard or 4 optional. Type: Hohner 43/65
Stitch Positions	Saddle, Corner, Side, Fold Only, Side Stitch and Fold
Programmable Memory Settings	20
Power Requirements	120V 60Hz 4.5A
Dimensions (LxWxH)	73" x 37" x 51"
Weight	831 lbs.
Options	4 Stitch Head Kit, Calendar Kit, DBM-600 Air Kit, DBM-600 Hand Feed Kit, D-Port Connecting Kit for DC-10/60PRO and DSC-10/20, DBM-SSW Short Stacker, Offset Trim Kit, DSF-2200 Hand Feed Kit

<sup>4</sup> Paper size is subject to feeder specification.

<sup>5</sup> Maximum Stitch capacity will vary dependent upon paper weight, paper size, paper conditions and if folding is required.

### DBM-400STR STACKER

Sheet Capacity (Min./Max.)	8.25" x 5.5" to 13.77" x 19.68"
Paper Capacity	17"
Speed	Up to 9,800 sets per hour*
Power Consumption	120V 60Hz 2.2A
Dimensions (LxWxH)	30" x 35" x 35"
Weight	325 lbs.



### DBM-600T TRIMMER

In-feed Booklet Size (W x L)	4.13" x 3.35" to 14.33" x 12.6"
Finished Booklet Size (W x L)	4.13" x 2.95" to 14.33" x 11.96"
Trim Width	0.04"/ 1mm to 0.98"/ 25mm (2.95" with 12 sheets or less)
Trimming Capacity	30 folded sheets of fine quality 80 gsm paper, equivalent to 60 sheets (Thickness: 0.23"/ 6.0mm)
Power Consumption	120V 60Hz 6.5A
Dimensions (LxWxH)	28" x 28" x 44"
Weight	514 lbs.
Options	DBM-LSW Extended Conveyor, DBM-SSW Short Stacker, DKT-200 Two-Knife Trimmer, D-Port Connecting Kit for DSC-10/60PRO and DSC-10/20, DKT-K Batch Kicker, Sliding Base for ASM

### DKT-200 TWO-KNIFE TRIMMER

Booklet Size (Min./Max.)	4.72" x 2.95" to 14.02" x 10" When gutter cutter option used: 7.87" x 2.95" to 14.02" x 10" (gutter)
Finished Size (Min./Max.)	4.72" x 2.95" to 13.9" x 10" When gutter cutter option used: 3.54" x 2.95" to 6.85" x 10" 0.04 - 1.18"; Gutter: 0.24"
Trimming Width	Within 5 mm (no gutter): fine 81.4 gsm/22 lb. 50 sheets Within 2.4 mm (gutter): fine 81.4 gsm/22 lb. 24 sheets
Trimming Thickness	Up to 9,000 sets/hour with gutter cutter; Up to 4,500 sets/hour (fine 81.4 gsm/22 lb. within 20 sheets A5 finished); Up to 3,900 sets/hour (fine 81.4 gsm/22 lb. within 20 sheets A4 finished)
Speed	220 - 240 V 60Hz 4.1A 640W 37" x 32" x 46"/ 91" x 32" x 47" (including stacker)
Power Consumption	1,040 lbs.
Dimensions (LxWxH)	
Weight	

### DCR-ST CROSS STACKER

Paper Size (Min./Max.)	Tray L - 8.46" x 12.60" to 13.98" x 17.72" Tray S - 8.27" x 12.80" to 5.83" x 9.84" Tray L - 3.94"; Tray S - 7.87"
Stack Height	
Speed	Tray L - 3,000 sets/hour 11" x 17"* Tray S - 4,000 sets/hour 8.5" x 11"* Cross and straight stacking, adjustable set interval
Other Features	120V 60Hz 1.0A
Power Consumption	28" x 27" x 25"
Dimensions (LxWxH)	Main unit - 97 lbs.; Tray L - 18 lbs.; Tray S - 18 lbs.
Weight	Note: Requires DCR-BP Bypass Conveyor when using in-line with bookletmaker

### OTHER SYSTEM CONFIGURATIONS (Additional components may be required)

**600i Booklet System** (DBM-LSW + DKT-200 + DBM-600T + DBM-600 + LUL-HM + PC & DSC-10/60i PC Controller Software + DSC-10/60i + LUR + DBM-400STR)

**600i Duetto Booklet System** (DBM-LSW + DKT-200 + DBM-600T + DBM-600 + LUL-HM + PC & DSC-10/60i PC Controller Software + DSC-10/60i + LDR + DSF-2200)

**600 Booklet System** (DBM-LSW + DKT-200 + DBM-600T + DBM-600 + LUL-HM + DSC-10/60i LCD Control Panel + DSC-10/60i)

**600i Digital Booklet System** (DBM-LSW + DBM-600T + DBM-600 + PC & DSF-2200 PC Controller Software + DSF-2200)

\* Dependent upon connected devices and number of bins in use

Production rates and specifications are based on optimal operating conditions and may vary depending on stock and environmental conditions. As part of our continuous product improvement program, specifications are subject to change without notice.

# Duplo

from print to documents

# 600i

## Booklet System

Automated precision  
Ideal for letter landscape applications  
User-friendly PC Controller and Intelligent Feeding  
Up to 5,200 sets per hour  
Flexibility to process collated and uncollated jobs



# Duplo

3050 S. Daimler Street, Santa Ana, CA 92705 (949) 752-8222 (800) 255-1933 (949) 851-3054 fax www.duplousa.com  
All rights reserved. No part of this document may be produced without permission of Duplo USA Corporation.

# Intelligent, High Production Bookletmaking with Automated Precision!

The 600i Booklet System is Duplo's high-end collating and bookletmaking solution. Integrating the fully automatic DBM-600 Bookletmaker with the high speed and intelligent DSC-10/60i Suction Collators, the 600i Booklet System produces professional high quality saddle, side, or corner-stitched booklets as well as letter landscape applications.

## AUTOMATED SIMPLICITY

Using Duplo's DSC-10/60i PC Controller software, the 600i Booklet System can easily be managed and controlled by a single operator via a PC. This intuitive Graphical User Interface (GUI) facilitates the programming and saving of jobs. Simply by entering or selecting the paper sizes, the PC Controller automatically calculates the stitch, fold, and trim positions. User-friendly interface elements such as the drop down list, check boxes, buttons, and sliders make it extremely easy for an operator to select or change settings and to make fine adjustments if needed. The PC Controller can save an unlimited number of jobs that can be instantly recalled to change from one job to another within 60 seconds without any tools required.

## INTELLIGENT MULTI-BIN FEEDING

Perform custom feed applications and fulfill a variety of unique job requirements by using the IMBF (Intelligent Multi-Bin Feeding) feature that comes standard with the PC Controller software. Seamlessly merge black and white documents with color media, combine un-collated offset with collated digital output, and create one-to-one marketing booklets by inserting variable data material. Take full control of the feeding sequence, link bins, select the bins to feed from, and specify how many sheets to feed from each bin. With the IMBF, documents can also be delivered set-by-set or sheet-by-sheet into a stacker or bookletmaker.

## SUPERIOR FEEDING

Equipped with a unique feeding and Air Management System, the DSC-10/60i Suction Collators provide optimum performance to feed a wide variety of paper types, weights, and sizes with superior efficiency and reliability.

High resolution optical sensors check and validate the feeding accuracy and automatically divert any faulty sets into a reject tray without stopping or interrupting production. Faulty sets can later be recovered from the reject tray, corrected and processed using the conveniently located hand feed station.

For an added level of confidence, optional ultrasonic sensors can be added to the DSC-10/60i Collators. Using sound waves instead of light, ultrasonic sensors are virtually impervious to paper thickness, color variations within the printed image, heavy toner coverage, or dark images and offer the flexibility to feed different paper weights from the same bin.

Users can connect up to 6 towers for a maximum of 60 bins. Divide the bins into 1/2, 1/3, and 1/4 blocks to allow reloading without having to stop or interrupt productivity. Use the Interleaf mode to insert one or two sheets between a specified number of sheets or control each bin individually by using the IMBF (Intelligent Multi-Bin Feeding) to program the bins to perform customized feeding sequences.

## PRODUCTIVITY

Utilizing state-of-the-art technology to automate and streamline the bookletmaking process, the 600i Booklet System requires minimal operator intervention. Users can produce up to 5,200 booklets per hour or collate up to 10,000 sets per hour into a stacker. Booklet production can be doubled, for certain applications, by adding the optional 4-stitch head kit, along with the DKT-200 Two-Knife Trimmer and Gutter Cutter module to enable 2-up bookletmaking. The DSC-10/60i Collators provide 10 bins and each bin can hold up to 2.6 inches of paper. Bins can be intelligently linked or separated into blocks to facilitate longer run lengths by allowing the operator to reload the empty bins without stopping or interrupting the stacking or bookletmaking process.

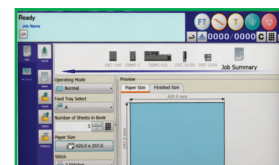
Produce flat, square spine booklets and increase their value by adding the optional ASM-500 Square Spine to the 600i Booklet System or as an offline solution, use the DSS-350 Square Spine.



The 2.6" bin capacity supports a variety of paper stocks 52-300 gsm and paper sizes ranging from 4.1" x 5.8" to 14" x 24".



8-belt air suction feed system and Air Management System ensure reliable feeding.

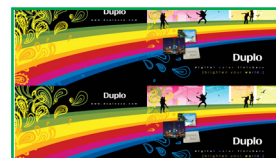


Create and save jobs as well as manage and control the entire system from a PC or laptop using the intuitive PC Controller software.

The integrated reject tray automatically diverts and collects sets that have missing or double fed sheets.



Lower Stack Tray makes switching from saddle stitch to corner or side stitch quick and simple.



Process 2-up applications with the DKT-200 and gutter cutter option.



DBM-LSW Long Stacker

DKT-200 Two-Knife Trimmer

DBM-600T Face Trimmer

DBM-600 Bookletmaker

LUL-HM Hand MARRY

DSC-10/60i Suction Collators

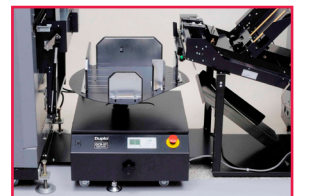
LUR Bridge

DBM-400STR Stacker

## COLLATING AND STACKING

The DSC-10/60i Collators have the ability to feed to the left into the DBM-600 Bookletmaker or to the right into a stacker. The DSC-10/60i collates up to 10,000 sets per hour depending upon connected devices and users can choose from two optional stackers:

- **DBM-400STR High Capacity Stacker** – Ideal for high volume stacking jobs, the DBM-400STR Stacker can straight or offset stacks up to 17". The DBM-400STR is attached to the right of the collator, opposite side of the bookletmaker, to allow for quick change over from bookletmaking to stacking without having to remove any devices.
- **DCR-ST Cross Stacker** – The DCR-ST can cross or straight stack up to 7.87". It connects between the collator and the bookletmaker. When the stacker is not being used, a bypass bridge redirects the paper to the bookletmaker for bookletmaking without having to remove any devices.



DCR-ST Cross Stacker

## VALUE ADDED OPTIONS

Customize the 600i Booklet System to meet your needs.

- LCD color touchscreen panel option as an alternative to the PC Controller\*
- Envelope Kit enables the feeding of #9 and #10 envelopes from bins 4 and 9 for insertion between certain sheets of the booklet.
- Ultrasonic Sensor Kit provides an enhanced level of double feed detection for documents with dark images or heavy ink/toner coverage. Each kit supports two bins; five kits are required to support all ten bins.
- 4-Stitch Head Kit required to produce 2-up applications.
- DKT-200 Two-Knife Trimmer adds three-side trimming capabilities to produce booklets with a full-bleed finish. Add the gutter cutter option to finish 2-up applications.
- ASM-500 SpineMaster or DSS-350 Square Spine give booklets a flat, square spine finish.
- DSF-2200 Sheet Feeder integrated with the 600i Booklet System creates the versatile 600i Duetto Booklet System. Increase productivity by processing pre-collated digital print documents in the DSF-2200 and un-collated offset applications in the DSC-10/60i Collators using a single system!

\* Please note the IMBF feature is only available with the PC Controller and not with the LCD panel.